

Outer Reef 540 Adventure

By Arnie Hammerman • April 21, 2026



Outer Reef's new Adventure Series blends modern European styling with serious cruising capabilities. We previously covered the Outer Reef 780 Adventure both when the [first boat in this new series launched](#) in the Netherlands in the spring of 2025 and when her [open ocean maiden voyage](#) was made last summer. The premier of the first in the Adventure series, the steel hulled 780, was a big departure for the Outer Reef Brand that is known for their sturdy composite cruisers. The second model in the series, the Outer Reef 540 Adventure, while still designed in the Netherlands by Bernd Weel Design, hits a little closer to the company's roots as she will be built in Taiwan using composite construction. The 540 Adventure maintains the innovative styling and serious cruising acumen of the 780 Adventure but in a size that is more manageable for many owner operators. The contemporary aesthetics of the 540 Adventure are meant to have a broad appeal that encompasses both younger and older boaters alike.

Designed For Both Coastal And Offshore Cruising

Engineered by Studio Delta Naval Architects, the 540 Adventure is meant to be equally adept at both long-range and coastal cruising. At an eco-cruising speed, her twin Volvo Penta D8-600 horsepower diesels driving straight shafts should be able to deliver a 2,000 nautical mile range. Humphree electric stabilizers and interceptors will ease the motion underway. A Side-Power/Sleipner electric bow thruster along with the twin engines should make docking easier. Robust Fiber Reinforced Polymer (FRP) construction allows Outer Reef to certify the 540 Adventure to CE Category A for Unlimited Oceans. This combination of efficient modern design, rugged engineering, and durable fabrication will give owners more choices as to where they want to cruise.

Comfortable Living



Accommodations are set up in three cabins with two heads. A crew cabin with a third head is an option that replaces an oversized lazarette. The owner's cabin is full beam with a king-sized island bed and an ensuite head. There is a VIP cabin forward with a queen-sized bed canted which provides a full walkaround and ensuite access to a head that is also shared with the foyer. A third twin bunk cabin rounds out the sleeping cabins. Julian Moore Design created an interior that looks both chic and elegant. Built as a production-style yacht, the 540 Adventure offers a selection of fine fabrics, veneers, and finishes that allow each owner to personalize their vessel to suit their unique tastes. No matter what finish is chosen, the overall layout and style present a fresh contemporary look and feel. This isn't your grampa's boat, or if it is, he's super cool! The styling might be more hip, but true to the renowned Outer Reef Yachts pedigree, the 540 Adventure still exemplifies the brand's commitment to exceptional craftsmanship, superior quality, and rugged reliability.



The main deck has a central galley that has good access into the salon lounge aft, forward to the pilothouse, and up the stairs to a substantial upper deck. The salon provides comfortable gathering spaces and connects to a covered aft deck seating area. Up top, there is space to stow and crane launch a four-meter (around 13') tender fore and aft, or a 3.3-meter (11') RIB athwartships. There is also a comfortable lounge with a table and a fully functioning outdoor helm station aloft and under the cover of the hardtop.

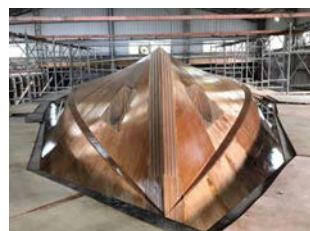
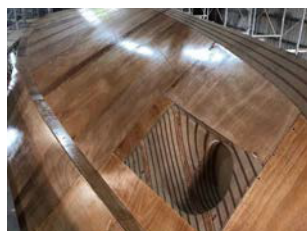
Outer Reef 540 Adventure Takes Form

At the Palm Beach International Boat Show, *Best4Boats* was able to catch up with Outer Reef President and CEO Jeff Drucek to get an update on the progress of this exciting new model. According to Drucek, tooling for the 540 Adventure is well under way.

"The plug and subsequent mold must meet our exacting standards," Drucek explained. "We expect perfection so that the molds release properly, and that the finished gelcoat out of the mold is like a mirror and is absolutely perfect. That extra time and care we put into the tooling pays off in the long run with a flawless product. The team that is building the tooling are extremely skilled, but I still make the trip overseas to the yard at critical steps during the tooling and build process to ensure everything is completed to the exceptional level that Outer Reef is known for."

Speaking with Drucek and seeing some recent photos of the in-process tooling got me excited about this interesting new project for Outer Reef. The 540 Adventure at 56'6" overall should be easily handled by a couple and able to fit into many slips and anchorages while coastal cruising. Her range, along with sturdy design and construction, will allow for longer ocean passages that expand her ability to reach more exotic locations. The Adventure series is a welcome addition to the multiple lines of capable cruisers that Outer Reef Yachts builds. Stay tuned as we follow along during the development and construction of the new Outer Reef 540 Adventure.

Exclusive Images Of The Outer Reef 540 Adventure Tooling In Progress



Outer Reef 540 Adventure Specifications

Length Overall: 56' 5" (17.2 m)

Waterline Length: 52' 9" (16.1 m)

Beam: 18' 3" (5.5 m)

Draft: 4' 0" (1.2 m)

Displacement: 39 tons

Fuel Capacity (Diesel): 1520 US Gallons (5,754 Liters)

Freshwater Capacity: 335 US Gallons (1267 Liters)

Holding Tank Capacity: 125 US Gallons (473 Liters)

Generator: Northern Lights 16kw

Engines: 2X Volvo Penta D8-600 straight shafts

Price Upon Request/Pre-orders for this new model are now open.

<https://www.outerreefyachts.com/yachts/540-Adventure/35>



Arnie Hammerman | Publisher

Boats and the ocean define my life. From teaching sailing to captaining yachts, marine publishing, and marketing, I've spent decades sharing seafaring tales. At Best4Boats, adventure awaits—welcome aboard![See Full Bio](#) >

Motorboats Yachts Marine Electronics Sailing Boating Fishing



For more articles about Outer Reef, Visit <http://best4boats.com/?s=outer+reef>

